



Formica InfinitiTM

ENDURING MATTE *by* FORMICA GROUP

INFINITELY GOOD LOOKING



Formica Infiniti™

ENDURING MATTE by FORMICA GROUP

INFINITELY GOOD LOOKING





Formica Infiniti™

is a surfacing material like no other. Elegant and sleek with a contemporary matte finish, it feels softer and works harder than anything we've made before. It's created using a technology that protects it from marks, finger prints and accidental abrasions so it stays looking better for longer.

What's more, it can be post-formed to hold a curve... It's one surface with endless possibilities.



Soft Touch



Anti-Finger Print



Anti-Marking



Thermal Healing of Micro-Scratches



Anti-Microbial



Post Forming

WALLS

F7927
Folkestone

TABLES

F0949
White

FEEL GOOD FEATURES

MATTE, NO MATTER WHAT

Our innovative, patent-pending technology has micro-contours on the material surface that diffuse light. This creates a luxurious matte finish, which can add warmth and elegance to any environment.

WALL &
PLINTH

F7912
Storm



SOFT TOUCH, SOLID PERFORMANCE

Formica Infiniti™ has a moleskin-like texture that's soft and silky smooth to the touch, but has all the durability of a solid surface. It's a feeling of quality that stands the test of time.

SHELF

F7923
Surf

WALL

F5342
Earth



WALL

F1238
Carnaval

IRRESISTIBLY RESISTANT

Because we've made **Formica Infiniti™** such a pleasure to touch, it made sense to include anti-fingerprint technology to make it more resistant to marking. It's the surface that looks good, feels good, and stays that way.



COUNTER
TOPS
F2253
Diamond
Black

WALLS

F5347
Maui



REMARKABLY UNMARKABLE

Formica Infiniti™ has looks that will make a mark on you, but thanks to our technology it's pretty hard to make a mark on it. Its unique surface technology protects it from abrasions, so perfect for horizontal applications in high-traffic areas.

DESK

F5347
Maui



WALLS

F5347
Maui



PERFECTLY POST-FORMABLE

We've created a surface that's the first of its kind, and kind of brilliant. An anti-marking super matte finish that can be post-formed to hold a curve to create beautiful streamlined interiors. It's easy to work with, and because it's been created with our ground-breaking technology, it always keeps its integrity.

SHELF
F6314
Neo Cloud



SHELF
F6314
Neo Cloud



UNLIMITED POSSIBILITIES

Formica Infiniti™ is a surfacing solution with exciting possibilities:

- It's perfect for both horizontal and vertical applications.
- Its post-formability allows for the creation of beautiful curves.
- Its antimicrobial properties makes it highly hygienic.
- If abrasions occur it can be thermally heated back to normal.
- It can do all this in a range of **20 decors** in **3 grades**: standard High Pressure Laminate, through-colour laminate and solid laminate.

The only limit is your imagination.

DOOR

F1238
Carnaval

FURNITURE

F2255
Polar White



Formica Infiniti™ in ColorCore®

SHELVES & CUPBOARDS

CC5342
Earth

SHELVES & CUPBOARDS

CC7940
Spectrum
Yellow

CUPBOARDS

CC2255
Polar White

ENHANCING ENVIRONMENTS

Formica Infiniti™ is your solution to make any project stand out from the rest. It lends itself particularly well to retail, hospitality and office environments. Easy to use in harmony with other materials, we've created it to enhance any space.





TABLE
F0949
White



LOOKS
THAT
LAST

Customers are influenced by the aesthetics of retail environments, and **Formica Infiniti™** gives them a stylish matte and timeless appearance. With its durability and elegance, it helps create places that people want to spend time in. Spaces that keep their looks for longer.



TABLE

F0949
White



DISPLAY
FRONTS
F2253
Diamond
Black

WALLS

F7912
Storm

WORKING WONDERS

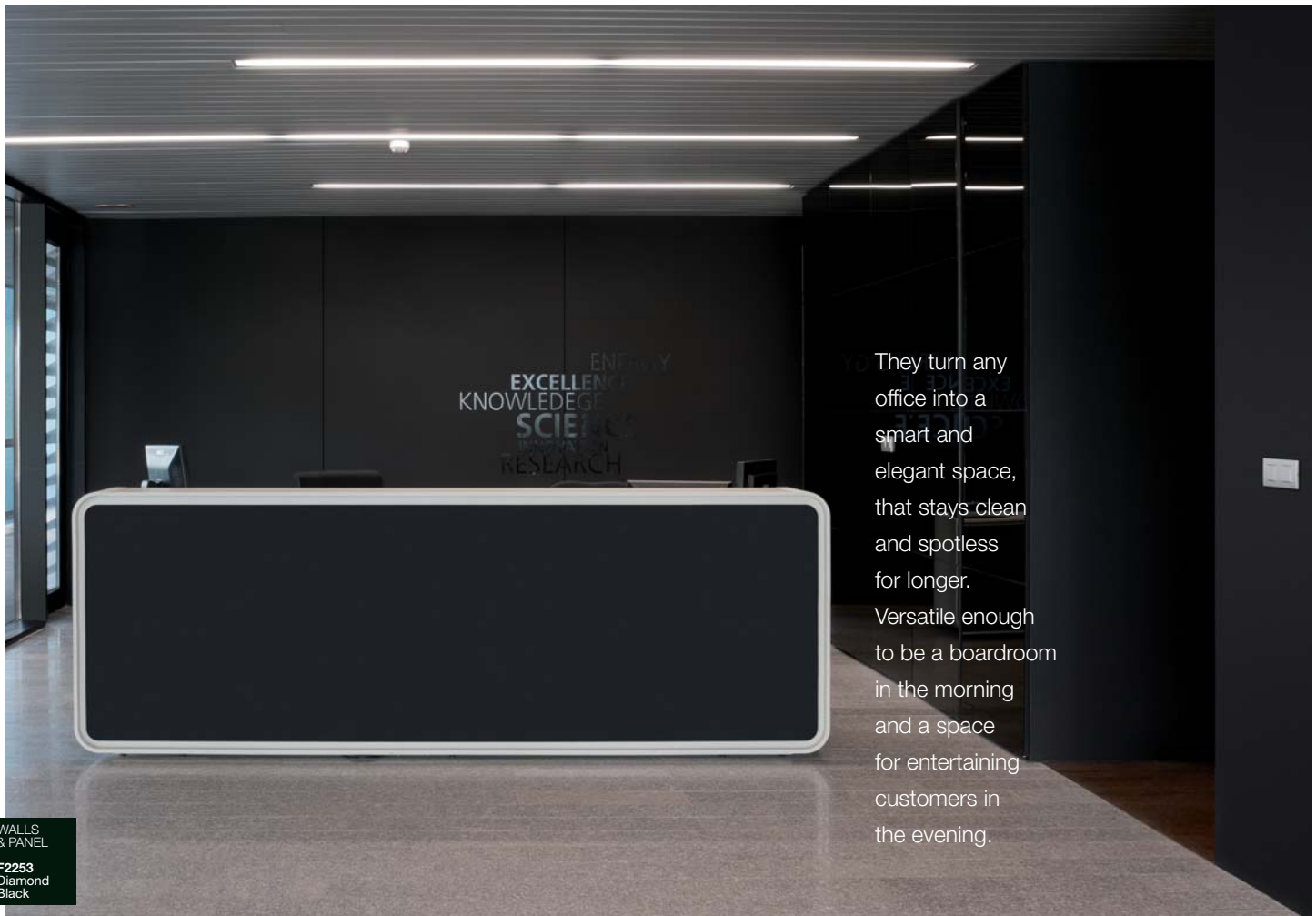
These distinctive surfaces can be used for everything from reception desks to hallway walls.

RECEPTION

F2253
Diamond
Black

DESK

F2255
Polar
White



WALLS
& PANEL

F2253
Diamond
Black

They turn any office into a smart and elegant space, that stays clean and spotless for longer. Versatile enough to be a boardroom in the morning and a space for entertaining customers in the evening.



WARM & WELCOMING HOSPITALITY

With **Formica Infiniti™** as a part of an interior, hospitality can really live up to its name. The surface has a luxurious feel, specifically made to look good even in high-traffic environments. Furthermore they have warm and welcoming colours that suit any interior design.



DOOR &
BAR FRONT
F2253
Diamond
Black

SMART TECHNOLOGY

Our **Formica Group Innovations Team** has been developing and perfecting our patent-pending curing process and next generation resin systems. Thanks to their efforts, it has helped us create our most advanced surface to date; a highly engineered matte surface.

This perfectly balanced fusion of process and resin systems has enabled us to create micro-contours that diffuse light, giving the surface an ultra-low gloss appearance. They also work to channel away moisture from the fingertips so they don't leave marks. The result is a surface that goes further than any other.

FURNITURE

F7932
Antique
White

FURNITURE

F2253
Diamond
Black

FURNITURE

F7912
Storm



THE CLEVER BIT

INNOVATIVE CURING PROCESS

The higher performance, better aesthetics and multi-functional attributes of **Formica Infiniti™** are possible as a result of our new innovative patent-pending curing process.

STATE OF THE ART RESIN SYSTEM

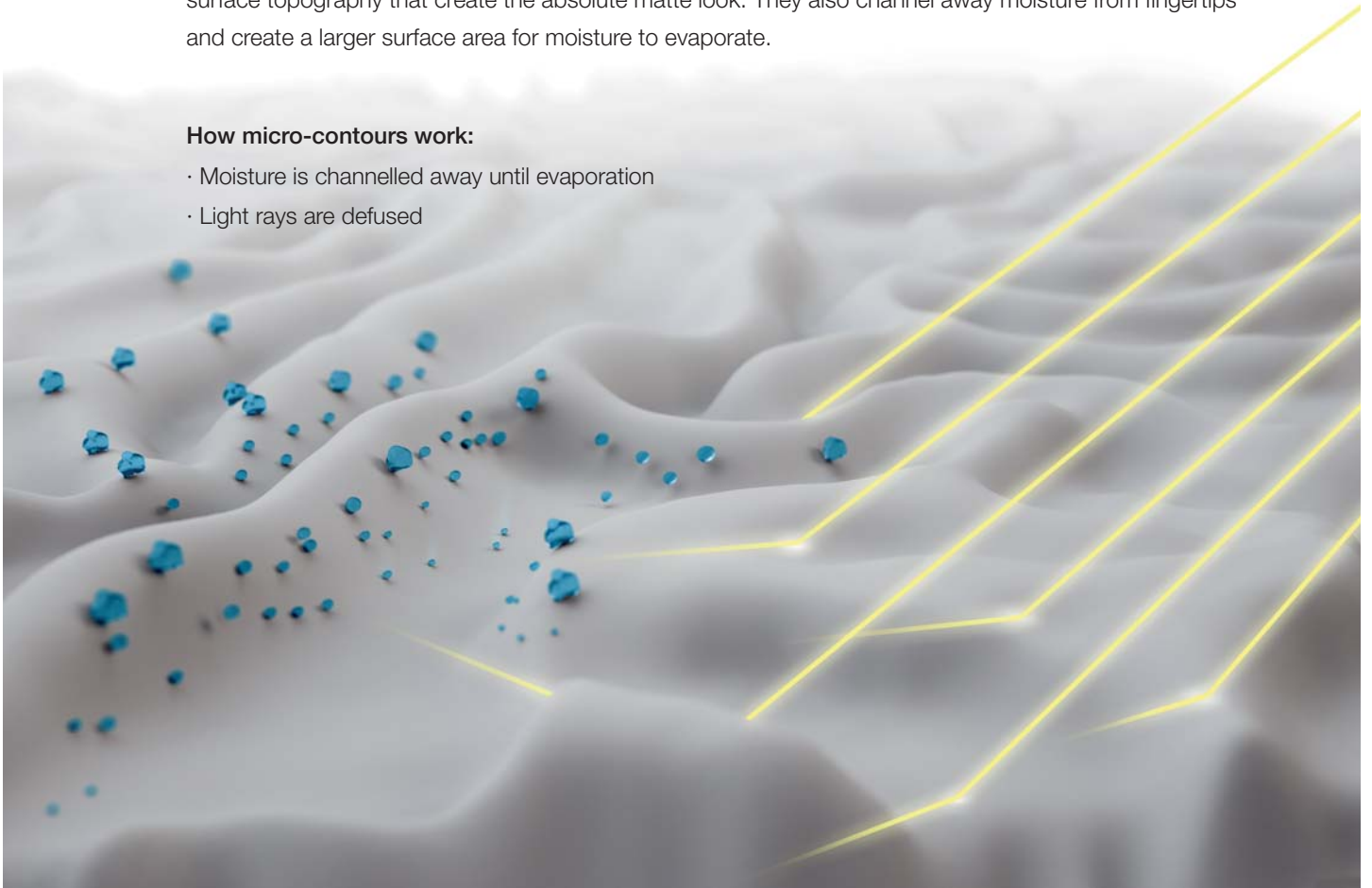
Our next generation resin system works in combination with our curing process to create micro-contours on the surface of the material. The resin system gives the material enhanced durability and micro-scratch thermal healing capabilities, as well as preventing degradation caused by microbial growth.

MICRO-CONTOUR SURFACE

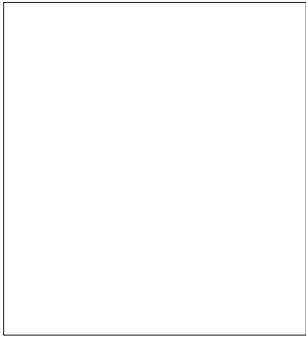
The micro-contours that are formed allow for the scattering and absorption of light waves within the surface topography that create the absolute matte look. They also channel away moisture from fingertips and create a larger surface area for moisture to evaporate.

How micro-contours work:

- Moisture is channelled away until evaporation
- Light rays are defused



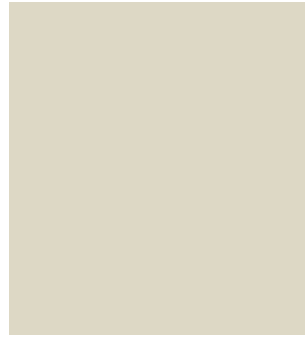
DOORS &
WALLS
F2255
Polar
White



F0949 Absolute Matte
White



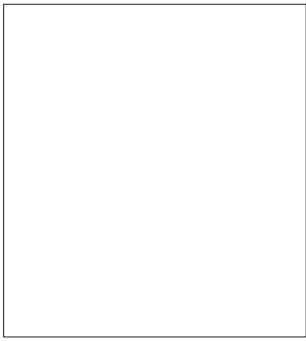
F7932 Absolute Matte
Antique White



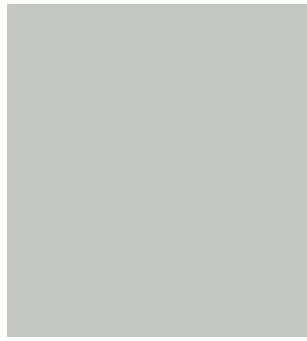
F7858 Absolute Matte
Purnice



F5342 Absolute Matte
Earth



F2255 Absolute Matte
Polar White



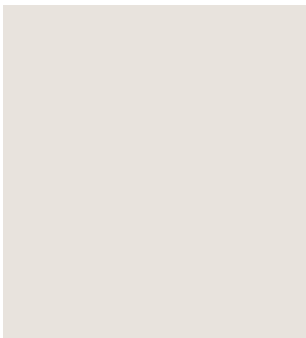
F7927 Absolute Matte
Folkestone



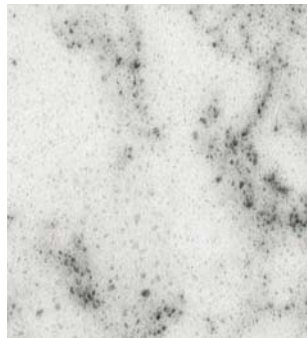
F7961 Absolute Matte
Fog



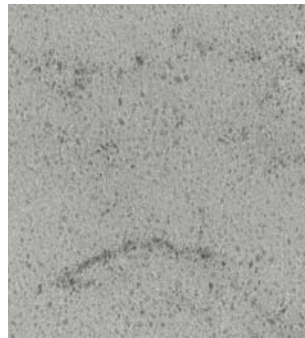
F7912 Absolute Matte
Storm



F7923 Absolute Matte
Surf



F6314 Absolute Matte
Neo Cloud



F6316 Absolute Matte
Neo Tornado



F6315 Absolute Matte
Neo Cyclone



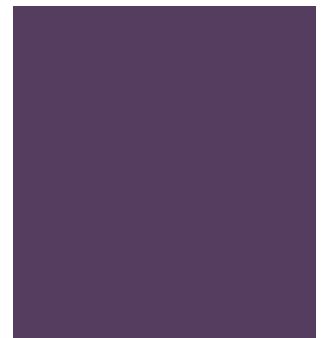
F7940 Absolute Matte
Spectrum Yellow



F3210 Absolute Matte
Levante



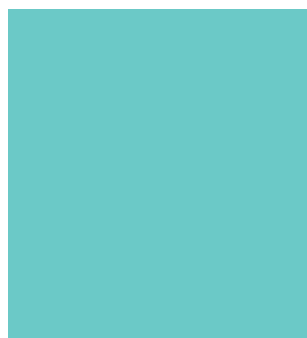
F1238 Absolute Matte
Carnaval



F6903 Absolute Matte
Cassis



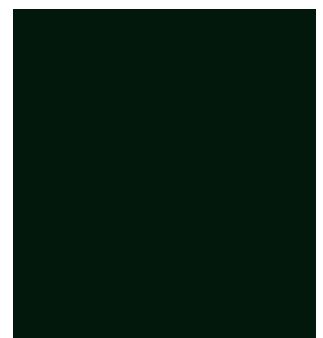
F4177 Absolute Matte
Lime



F5347 Absolute Matte
Maui



F8822 Absolute Matte
Denim



F2253 Absolute Matte
Diamond Black

Designs given in this publication have been matched as closely as printing conditions allow and because the colour samples may differ in shade, hue, tone or brightness to actual product, we recommend that you request samples at formica.com.

Code	Name	NCS®	RAL®	Light reflect. value	Sheet size 3050 x 1300 mm			
					Formica® Laminate	Formica® Compact	ColorCore®	
					Grade	HGP	CGS	BTS
					Thickness	0.7 mm	6, 8, 10, 12 mm	1.3 mm
F0949 / CC0949	White	S 0502-R50B		81.1	●	●	●	
F1238	Carnaval	S 1580-Y90R	3001	13.2	●	●		
F2253 / CC2253	Diamond Black	S 9000-N	9011	4.4	●	●	●	
F2255 / CC2255	Polar White	S 502-G50Y	9016	84.3	●	●	●	
F3210 / CC3210	Levante	S 1070-Y40R	2011	35.2	●	●	●	
F4177 / CC4177	Lime	S 1050-G50Y		56.6	●	●	●	
F5342	Earth	S 6005-Y20R	7006	17.7	●	●		
F5347	Maui	S 2030-B30G		39.8	●	●		
F6903	Cassis	S 6030-R50B		7.8	●	●		
F7858 / CC7858	Pumice	S 2005-Y30R		57.7	●	●	●	
F7912 / CC7912	Storm	S 7000-N	7015	12.6	●	●	●	
F7923 / CC7923	Surf	S 1002-Y	9002	66.9	●	●	●	
F7927 / CC7927	Folkestone	S 2500-N		51	●	●	●	
F7932 / CC7932	Antique White	S 0804-Y30R		75.6	●	●	●	
F7940 / CC7940	Spectrum Yellow	S 1070-Y10R	1023	52.6	●	●	●	
F7961 / CC7961	Fog	S 4000-N	7004, 7036	34.3	●	●	●	
F8822	Denim	S 5030-R90B	5007	14.3	●	●		
F6314	Neo Cloud				●	●		
F6315	Neo Cyclone				●	●		
F6316	Neo Tornado				●	●		

Flame retardant high pressure laminate available on made to order basis.

- Standard availability
- Made to order

Performance Features

- Absolute Matte
- Soft Touch
- Anti-Finger Print
- Anti-Marking
- Thermal Healing of Micro-Scratches
- Anti-Microbial
- Postforming Grade HGP
- Chemical Resistant
- Any Orientation
- Impact Resistant
- Water Resistant
- Hygienic
- Self Supporting-Grade CGS
- Flat Bonding-Grade HGP
- Stain Resistant

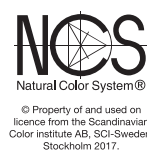
Surface Finish & Grade

Surface Finish Description	Surface Finish Designation	Surface Finish Code
Absolute Matte	AN	AN

Grade	Grade Description	Formica Product
HGP	Horizontal, General purpose, Postforming	Formica® Laminate
CGS	Compact, General purpose, Standard	Formica® Compact
BTS	Coloured core, Standard	ColorCore®



EN 438



The performance features are for general reference only. For more specific product information, including technical data and warranties please refer to formica.com (Knowledge). Formica Group are FSC™ certified and comply with the requirements of FSC. Network of participating European Formica Group sites is shown on certificate number TT-COC-003588.

Austria

T: +43 1 3202657
office@dekotech.at

Belgium

Tel: +32 2 705 18 18
contact.belgie@formica.com

Denmark

Tel: +45 43 58 82 00
info.danmark@formica.com

Finland

Tel: +358 3 5800 200
info.finland@formica.com

France

Tel: +33 (0) 3 87 29 10 13
service.echantillons@formica.com

Germany

Tel: +49 (0) 180 367 64 22
kontakt.deutschland@formica.com

Holland

Tel: +31 (0) 70 413 48 20
contact.nederland@formica.com

Ireland

Tel: +353 1 872 4322
samples.uk@formica.com

Italy

Tel: +39 068 7502115
italia@formica.com

Middle East

Tel: +971 4 329 82 80
middle.east@formica.com

Morocco

Tel: +212 (0) 522472047
administration.maroc@formica.com

Norway

Tel: +47 800 13 016
info.norge@formica.com

Poland

Tel: +48 22 516 20 84/85/86
info.polska@formica.com

Russia

Tel: +7 495 646 07 25
Samples tel: +8 800 333 11 63
russia@formica.com

Spain

Tel: + 34 96 122 07 01 (Option 2)
contact.es@formica.com
muestras@formica.com

Sweden

Tel: +46 42 38 48 00
info.sverige@formica.com

United Kingdom

Tel: +44 (0) 191 259 3512
samples.uk@formica.com



formica.com